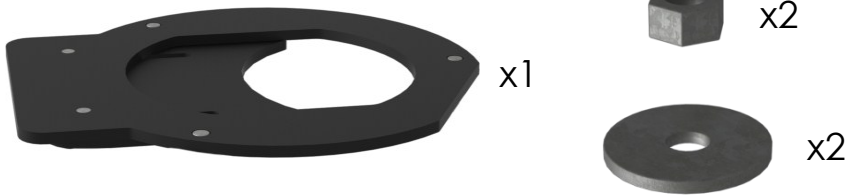




Adjustable Internal Damper Installation Guide

The adjustable internal damper allows you to restrict the draw in an over drawing flue. It is installed below the spigot. Do not install into a stove whilst it is hot or in use. Observe safe working practices whilst installing or adjusting. Please consult the stoves original Installation Guide for further information.

Parts Included

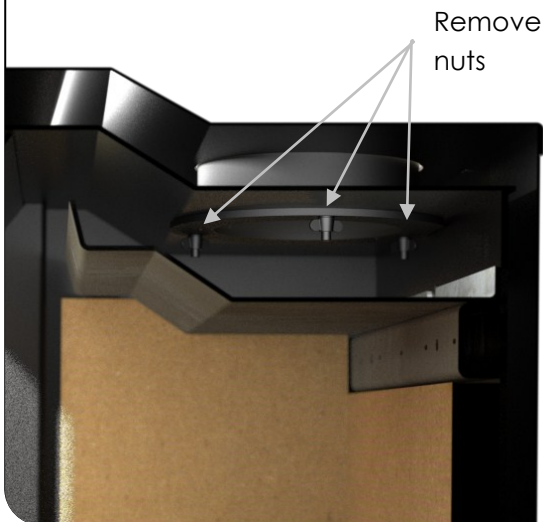


Tools Needed



Step 1

Remove the throat plate and the three nuts holding the spigot in place. Ensure the spigot does not drop from its position whilst these nuts are removed.



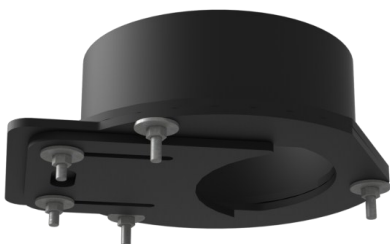
Step 2

Place the damper assembly onto the three threads in the stove. The flat edge of the damper assembly should self-locate to the rear of the stove. Replace washers and nuts in the order illustrated below.



Step 3

The completed spigot and adjustable damper should look similar to below, but in situ in the stove.



Step 4

You can adjust the damper by loosening the two adjustment nuts, sliding the plate as required and then tightening.

Adjustment nuts

